



Only a short ride away from Kanazawa City on the Hokuriku Shinkansen!

Special Edition

- Nonoichi City
- Hakusan City
- Kawakita Town
- Nomi City
- Komatsu City
- Kaga City

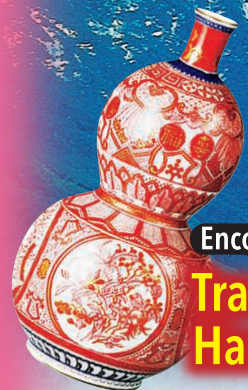
Kaga no Kuni



History and culture rooted in sacred Mt. Hakusan

Explore! Stunning Views & Mountain and Sea Culture

Experience it all!



Encounter! Traditional Handicrafts

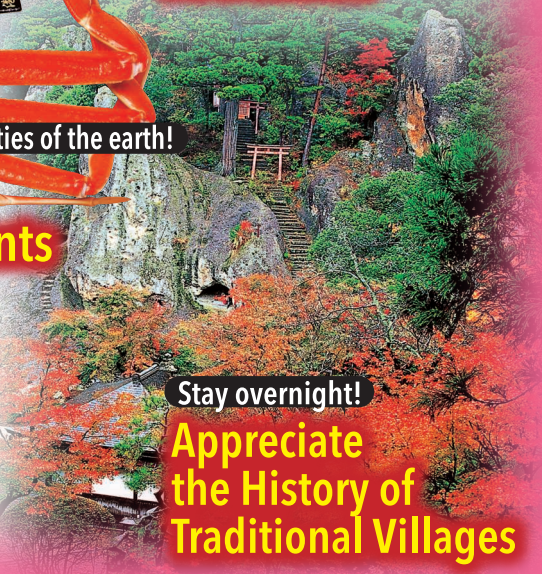


Have fun in nature! Wellness & Recreation



Enjoy the bounties of the earth! Cafés & Restaurants

Soak in famous hot springs! Hot Springs Across the Region



Stay overnight! Appreciate the History of Traditional Villages



Nature



Crafts



Hot Springs



Local Life

Just by Kanazawa!

Kaga no Kuni in a nutshell

NONOICHI CITY



A charming town selected as the best place to live in Japan

Camellias



INFORMATION

Nonoichi City Tourism & Local Products Association



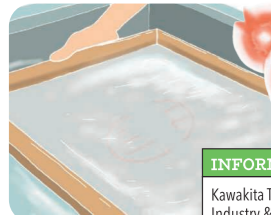
Old Hokkoku Kaido Road

KAWAKITA TOWN



Local crafts and specialty products nurtured by the Tedorii River

Figs



INFORMATION

Kawakita Town Office Industry & Economy Division



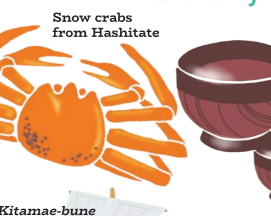
Kaga gampi paper

KAGA CITY



A land of hot springs, Kutani ceramics and lacquerware beloved by artists

Snow crabs from Hashitate



INFORMATION

Visit Kaga



02

HAKUSAN CITY



Magnificent nature linking Mt. Hakusan to the Sea of Japan

Tedorii Gorge



INFORMATION

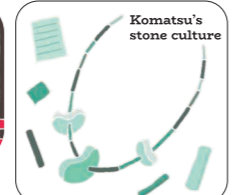
Urara Hakusanbito Hakusan City Tourism League



KOMATSU CITY



Sharing and passing on the culture of craftsmanship!



INFORMATION

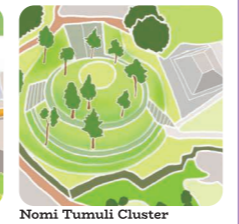
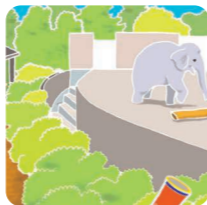
EXPLORE KOMATSU



NOMI CITY



Raising awareness of Kutani ceramics and the Kofun period of the Hokuriku region



INFORMATION

Nomi City Sightseeing Interchange Section



Kaga no Kuni Tourist Information

Welcome to Kaga no Kuni website



All-Kaga Council Instagram



Go meet your animal tour guides in person!

Nomi City Play

Ishikawa Zoo

Encounter mighty animals up close!
A zoo that has recreated the natural habitats of its residents. There are plenty of things to see, such as the Toki Satoyama Center, where you can observe crested ibises, and the aerial walkway, from which you can watch tigers walking by.

MAP P3B1

600 Tokusan-machi, Nomi City 20 min. drive from JR Nomi-Neagari Station Admission: 840 yen 9 A.M.-5 P.M. (open until 4:30 P.M. from Nov. to Mar.) Tue. (closed the following day if Tue. is a national holiday; open throughout spring and summer holidays) 1,300 spaces



Come and meet the guides!



The zoo's popular white tiger



The pygmy hippo, known as one of the three most famous of the world's endangered animals

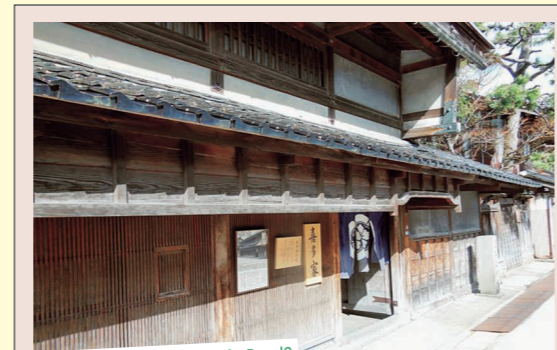


Animal Petting Corner

ふれあい体験館

Get up close and personal with small furry and feathered friends

The Animal Petting Corner opened in April 2021 as part of the Children's Petting Zoo. Visitors can pet small animals such as rabbits and parakeets. *Admission is by reservation only; numbered tickets are distributed in front of the petting corner (available until tickets run out) *May be closed to prevent the spread of COVID-19



Nonoichi City See

Kita Family House

喜多家住宅

The architectural beauty conveyed by a traditional townhouse
The Kita family is an old family that used to operate a sake brewing business. The main building was originally located in Kanazawa, but was moved to its current location during the Meiji period (1868-1912). The main front door and intricate latticework on the facade are typical of Kanazawa machiya (traditional townhouse) architecture.

MAP P3B1

3-8-11 Honmachi, Nonoichi City From the south exit of JR Nonoichi Station, take the northern route of the community bus "Notty" to the Kitake Jutaku bus stop, then walk a short distance 400 yen 9 A.M.-5 P.M. Mon. (closed the following day if Mon. is a national holiday) 2 spaces



What's the Old Hokkoku Kaido Road?

Constructed during the Edo period (1603-1868), this road connected the post towns of Torimoto in Shiga Prefecture and Oiwake in Nagano Prefecture. When heading to Kyoto along the Old Hokkoku Kaido Road, Nonoichi City's Honmachi district was the first post town after Kanazawa Castle, and many examples of historical architecture can still be seen there.



Nationally Designated Important Cultural Property

03

Hakusan Tedorigawa Geopark

Explore the Tedor River from its upper to lower reaches, passing waterfalls and stunning mountain views along the way. The view from the Shishiku Highland is one of the signature sights of the Hakusan Tedorigawa Geopark!



▲Toganokidai parking lot with a view of Mt. Hakusan beyond the mountain ridge

Hakusan Shirakawa-go White Road

●白山白川郷ホワイトロード



The views are spectacular—both in summer, when Mt. Hakusan reveals glimpses of white snow between the greenery of the trees, and in autumn, when the mountains don their autumnal colors of red, yellow, and orange.

A scenic driving route for an invigorating trip through nature

This 33.3 km driving route takes you from the foot of Mt. Hakusan to the historic village of Shirakawa-go. The road winds through a beech forest at an elevation of 600 to 1,450 meters, with many spots to stop at along the way, including seven waterfalls and several observatories with views of Mt. Hakusan.

MAP P3B2

- ▲ From Ozo, Hakusan City, to Shirakawa Village, Gifu Prefecture 1 hr. 30 min. drive from JR Kanazawa Station
- One-way in standard car: 1,700 yen; one-way in kei car (light motor vehicle): 1,400 yen
- 7 A.M.–6 P.M. (8 A.M.–5 P.M. from Sep. 1 to Nov. 10), exits are closed one hour after closing time
- Nov. 11 to early June (exact dates vary depending on amount of snow fall)



Photo spot

With a height of 86 meters, Fukube Falls is the top attraction along the Hakusan Shirakawa-go White Road



What's a Geopark?

A geopark is a type of natural park that includes elements of geological heritage from which we can learn about the Earth's history, including nature such as the inhabiting plants and animals, and other objects of archaeological and cultural value. The Hakusan Tedorigawa Geopark was registered as a Japanese Geopark in 2011, with the Tedor River area the centerpiece of its themes, "Journey of Water" and "Journey of Rock." It is now attracting attention in its bid to become a UNESCO Global Geopark.

◀ Four sets of armor excavated from the Nomi Tumuli Cluster are on display in "The Birth of Nomi (the Kofun period)" exhibition room

Mountain and Sea Culture

Discover the wisdom and culture of the people who live around the Tedor River connecting Mt. Hakusan with the Sea of Japan, reaping the blessings of its abundant nature.



Nomi Furusato Museum

●能美ふるさとミュージアム

Learn about Nomi's history and culture, beginning in the Paleolithic Age

This museum opened in October 2020 at the foot of the Wadayama Tumuli Cluster. It introduces history, nature, and folk customs of the Nomi area dating back to the Paleolithic Age through model displays and videos organized around five themes. Highlights include earthenware and armor excavated from the Nomi Tumuli Cluster, which is a National Historic Site of Japan.

◀ Take a walk around the Wadayama Tumuli Cluster next to the museum

MAP P3A1

- W-1-1 Terai-machi, Nomi City
- From JR Nomi-Neagari Station, ride the "Nomi" community bus for 15 min., then get off at the Nomi Furusato Museum bus stop
- Exhibition fee: 300 yen
- 9 A.M.–5 P.M. (entry until 4:30 P.M.)
- Mon., 3rd Tue. of each month (if Tue. is a national holiday, closed the following day), other temporary closures
- P 27 spaces



Historical Tidbit

There's also an exhibition room where you can learn about the *Hakusan Mandala*, a painting depicting the folklore surrounding Mt. Hakusan, through a board game

Cycling

Hakusan City Play

Tedor Canyon Road

●手取キャニオンロード

Feel the refreshing breeze of the gorge while you ride

This 19.6-km dedicated cycling road stretches from Tsurugi to the Sena Roadside Station. Built on the remnants of an abandoned railroad line, the road crosses the Tedor Gorge and offers a pleasant cycling experience with views of the countryside.

MAP P3B1

- From Tsurugimito-machi to Seto in Hakusan City



Bike Rental Spots

Hakusan City Tourism League

● 白山市観光連盟

- At the tourist information center, there are 24 bicycles available to rent. Options include city bikes, mountain bikes and electric bikes.
- Inside the Hakusan City Hall Tsurugi Branch, 4-Nu-85 Tsurugihonmachi, Hakusan City
- Next to Tsurugi Station on the Hokuriku Railroad Ishikawa Line
- City bike or mountain bike (one day): 500 yen; electric bike (one day): from 800 yen
- 9 A.M.–5 P.M. (last rental at 4 P.M.)
- Year-end and New Year's holidays
- Parking available

Stop by after cycling

Kawakita Town Day spa, dine

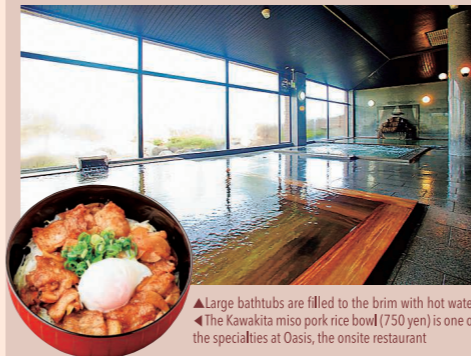
Kawakita Onsen Fureai-no-Yu

●川北温泉 ふれあいの湯

This bathing facility is located inside the Kawakita Town Fureai Health Center. The women's side has Western-style baths, while the men's side has Japanese cypress and rock baths; both are spacious and relaxing. There is also a sauna and relaxation space.

MAP P3B1

- 100 Hitotsuya, Kawakita-machi, Nomi-gun
- 15 min. drive from JR Mikawa Station
- Entry: 300 yen
- 10 A.M.–10 P.M. (reception closes at 9 P.M.)
- Tue. (if Tue. is a national holiday, closed the following day)
- P 200 spaces



▲ Large bathtubs are filled to the brim with hot water
▲ The Kawakita miso pork rice bowl (750 yen) is one of the specialties at Oasis, the onsite restaurant

Michi-no-Eki Shirayama-san

(Roadside Station) ●道の駅しらやまさん(白山市観光情報センター)

Book at the Hakusan City Tourist Information Center, located in the information building housing the Hakusan Tedorigawa Geopark exhibit. Only two mountain bikes are available to rent.

- 200 Wasadani-machi, Nomi City
- 10 min. drive from Tsurugi Station on the Hokuriku Railroad
- Mountain bike (one day): 500 yen
- Bike rental: 9 A.M.–5 P.M. (last rental at 4 P.M.)
- Winter season
- P 28 spaces

Hakusan City See

Shirayama Hime Jinja Shrine

●白山比咩神社

Pray to the goddess of relationships, experience nature

Experience the natural beauty of the grandest of the approximately 3,000 shrines dedicated to Mt. Hakusan. Shirayama Hime Jinja Shrine was first built about 2,100 years ago and by local lore is where the goddess of marriage and matchmaking resides. If you take the Omotesando entrance at the base, you can enjoy the sounds of trickling water while looking up at the centuries-old cedar trees.

MAP P3B1

- Ni-105-1 Sannomiya-machi, Hakusan City
- 45 min. drive from JR Kanazawa Station
- Free to visit (entry to shrine museum: 300 yen)
- 9 A.M.–4 P.M. Closed between Dec. and Mar.
- P 500 spaces



Architectural highlight

The single-story wooden station building with its tiled roof matches the Tsurugi townscape



Hakusan City See

Tsurugi Station

●北陸鉄道石川線 鶴来駅 (Hokuriku Railroad Ishikawa Line)

A station building from the past that is still in use today

Tsurugi Station is the last stop on the Hokuriku Railroad Ishikawa Line. Built over 90 years ago, the wooden station building looks like something straight out of an old Japanese film. Photos of the station exterior taken around 1952 are displayed inside the station building.

MAP P3B1

- 4-Ni-50-3-1 Tsurugi-honmachi, Hakusan City
- Tsurugi Station on the Hokuriku Railroad Ishikawa Line
- 6 A.M.–10 P.M.
- Open year-round
- None
- The building's retro appearance is popular with train enthusiasts



▲ The gorge as seen from Furo Bridge, where the view of the steep gorge walls rivals that of Komon Bridge

Hakusan City See

Tedor Gorge

●手取峡谷

Beautiful natural formations carved by the Tedor River

This gorge, with 20 to 30-meter-high cliffs spans about eight kilometers of the Tedor River's middle reaches. You can see a variety of landscapes that vary depending on the flow of the river and the types of rocks. Highlights include the area around Komon Bridge, where the river narrows, and Watagataki Waterfall, with its 32-meter drop.

MAP P3B1

- Shimoyoshitani-machi, Hakusan City
- 50 min. drive from JR Kanazawa Station
- Free to visit
- 60 spaces (Watagataki Waterfall parking lot *closed in winter)



Photo spot

Watagataki Waterfall, named for its wata (cotton)-like spray. You can climb down to the pool at the base of the waterfall.



▲ A view that allows you to appreciate the natural abundance bestowed by the Tedor River

Hakusan City See

Shishiku Highland

●獅子吼高原

A vast panorama stretching across the Tedor River Alluvial Fan to the Sea of Japan

A highland situated at an elevation of about 650 meters in the Mt. Hakusan foothills. Take the gondola (round trip: 710 yen; only available from April to November) to the summit to get a panoramic view of the Tedor River and its surrounding countryside. You can also enjoy trekking up Mt. Okushishiku.

MAP P3B1

- Ri-110 Yawata-machi, Hakusan City
- 40 min. drive from JR Kanazawa Station
- Free to walk
- 10 A.M.–5 P.M. (until 4 P.M. in winter)
- Tue. and Fri. in winter
- P 250 spaces



Historical Tidbit

This shrine is the head shrine of over 3,000 shrines across Japan that worship Mt. Hakusan



▲ The magnificent main hall, surrounded by Japanese cedar and zelkova trees



▼The striking building was designed by world-renowned architect Kuma Kengo



▼The studio offers innovative tableware, such as their original brand ETHN19 (pronounced "ethnic") made using the techniques of Kutani ceramics, which traditionally feature vivid paintings



Kutani Ceramics

▲One of the few facilities in Japan where you can watch the porcelain manufacturing process

Komatsu City See, play, buy
CERABO KUTANI
 (Kutani Ceramic Laboratory)
 ●九谷セラミック・ラボラトリー

▼The painting course (2,750 yen; shipping charged separately) involves painting in the outlined design using the five classic colors of Kutani ceramics



The diverse world of Kutani ceramics created from precious porcelain stone
 A multipurpose Kutani studio located in Komatsu City, where Hanasaka porcelain stone—the raw material needed to make Kutani ceramics—is produced. The studio features a factory that crushes porcelain stone to make porcelain clay, a gallery displaying works by Kutani artisans, and hands-on workshops taught by artisans who work at the rental studio.

MAP P3A1
 ●A-91 Wakasugi-machi, Komatsu City
 ●10 min. drive from JR Komatsu Station
 ●Admission: 300 yen ●10 A.M.–5 P.M. (entry until 4:30 P.M.) ●Wed. ●30 spaces



Nomi City See, buy
Kutani Choemon
 ●上出長右衛門窯

Traditional techniques fused with artistic sensibility
 Founded in 1879, this Kutani studio has been around for six generations. Products featuring motifs associated with China's Ming dynasty (1368-1644) arranged in a modern style and painted in *gosu*, an indigo blue pigment, are popular. Workshop tours are held during the Kiln Festival that takes place every year during the Golden Week holiday (late April to early May).

MAP P3A1
 ●Ho-65 Yoshimitsu-machi, Nomi City
 ●45 min. drive from JR Kanazawa Station
 ●Showroom: 10 A.M.–5 P.M. (reservation required one week in advance for workshop tours) ●Sat., Sun., national holidays ●10 spaces



Timeless tableware beloved for generations
 I place importance on the history of porcelain and Kutani ceramics, which originate in East Asia, producing pieces at Kutani Choemon that I hope bring cheer to peoples' daily lives and never grow stale.



Kamide Keigo, sixth-generation successor of Kutani Choemon and representative of Kamide Shigei LLC

▲The workshop, where porcelain is sculpted on pottery wheels, faces the first-floor windows
 ●Each piece is hand-painted by skilled artisans
 Come visit the cities of Komatsu, Nomi, and Kaga, where Kutani ceramics are produced!



▲Sometsuke (underglaze blue), a technique in which unfired porcelain is painted directly with *gosu* pigment and fired in a kiln



▲The Fuefuki (flutist) handleless teacup (6,600 yen each) is one of the studio's signature products. Artisan Kamide Keigo created his own interpretation of the traditional flutist motif (top left)

Yamanaka Lacquerware



▲mokume bowls made by Sato Yuji are available for purchase from 3,300 yen



Woodturner Sato Yuji
 Crafts that fit into modern life
 Yamanaka Lacquerware is crafted using a technique called *tatekadori*, which has an end-grain orientation in which wood fibers run vertically. This allows for thin, intricate work, as well as a finish that shows off the wood grain and a design that can easily be utilized in modern life.

▶Try making a small zelvoka box (back right) by shaving rough-hewn wood, from 4,400 yen



▲Using chisels and scrapers to shave a kind of pedestal called a wooden sawhorse



Kaga City See, play, buy
mokume

▲Each tool, including a variety of chisels and scrapers, is a unique piece made by the woodturner himself

Experience making items that showcase the beauty of wood grain

mokume is a woodturning workshop run by Sato Yuji, a woodworker who trained extensively in Yamanaka Onsen. With a lathe and other specialized tools for crafting Yamanaka lacquerware, visitors can carve their own small boxes or bowls for 4,950 yen and have the finished product shipped to their homes (shipping fee excluded).

MAP P3A2
 ●Ni-60 Yamanaka-onsen Sakae-machi, Kaga City ●From JR Kaga-Onsen Station, take the Hokutetsu Bus Onsen-Yamanaka Line to the Yamanaka Onsen Bus Terminal, then walk for 10 min. ●10 A.M.–4 P.M. ●Thu. (open if Thu. is a national holiday) ●Use the free tourist parking lot



The best place to try traditional handicrafts

Komatsu City See, play, buy
Yunokuni no Mori Traditional Handicrafts Village
 ●加賀伝統工芸村 ゆのくにの森

Experience all of Ishikawa's crafts in one theme park!

Choose from over 50 workshops, from Kutani ceramics or Yamanaka Lacquerware painting to Yuzen dyeing, while soaking in the atmosphere of lovely folk houses harking back to the Edo to Meiji periods (1603-1912).

MAP P3A1
 ●Na-3-3 Awazu-onsen, Komatsu City
 ●From JR Kaga-Onsen Station, take the CANBUS Mountain Route to Yunokuni no Mori ●Admission: 550 yen (fees for activities are charged separately) ●9 A.M.–4:30 P.M. ●Thu. (open if Thu. is a national holiday), temporary closures (check the website for details) ●300 spaces



▲The umbrella sky display (Mar to Nov) is a popular Instagram spot.

▶You can make six postcards during the workshop for 1,650 yen

Kawakita Town See, play, buy
Kato Washi ●加藤和紙

The traditional craft of washi papermaking, passed down by female artisans

This is the only studio that continues to produce Kaga *gampi* paper, a craft that has been handed down since the Edo period (1603-1868). Kaga *gampi* paper is a type of Japanese paper made from the fiber of the *gampi* plant, a wild shrub indigenous to Yamanaka and elsewhere in Kaga. The paper is thin but strong with a satin-like sheen. It used to be used for making gold and silver leaf.

MAP P3B1
 ●Wo-152 Nakajima, Kawakita-machi, Nomi District ●27 min. drive from JR Mikawa Station ●Free to visit ●9 A.M.–4 P.M. (reservation required two days in advance for visits and workshops) ●Irregular closures ●6 spaces



Gampi Paper



▲Today, eighth-generation successor Kato Makiko makes paper using techniques inherited from earlier generations of women

Traditional Craft Souvenirs



Nomi City
Kokuzou Kiln ●虚空窯
MAP P3A1 ●55-3 Wake-machi, Nomi City
 ●9 A.M.–6 P.M. (until 4 P.M. on Sat.) ●Sun., national holidays
 *Store can be opened on holidays if notified in advance



Ippuku teacups
 (Left) Flower banquet "utage" (red): 5,500 yen
 (Right) Camellias in overglaze enamel (black): 6,400 yen
 Kutani ceramics you'll want to use every day
 Kutani cups with a round shape that fits perfectly in the hand. Their gorgeous painted designs, characteristic of Kutani ceramics, will add a splash of color to your daily life.



Nonoichi City
Camellia mizuhiki accessories
 Brooch 1,980 yen
 Lapel pin 1,320 yen
 Mizuhiki, traditional Japanese paper cord
 Accessories made from *mizuhiki* cords, twisted in the shape of camellias, the official blossoming tree of Nonoichi City. They are meant to bring good luck in forming relationships.



Yokomachi Urarakan
 ●横町うらら館
MAP P3B1
 ●Ta-1 Tsurugi-shinmachi, Hakusan City
 ●10 A.M.–4 P.M.
 ●Open year-round



Hinokizaiku (cypress weaving)
 (Back) Bag: 5,000 yen
 (Left) Mask case: 700 yen
 (Right) Coaster: 500 yen each
 Contemporary designs with rustic charm
 Lightweight, breathable, and durable items crafted from thin strips of woven cypress.

Hakusan City
Yokomachi Urarakan
 ●横町うらら館
MAP P3B1
 ●Ta-1 Tsurugi-shinmachi, Hakusan City
 ●10 A.M.–4 P.M.
 ●Open year-round



Stay in a Village and Feel Its History

If you want to fully experience the history and culture of a place, booking a stay is a must. Here are some recommended inns around local hamlets, and nearby spots to visit.

◀ An unspoiled traditional Japanese landscape surrounded by mountain forests

▶ The natural rock formation in autumn.

Kaga City See

Kaga Higashitani ●加賀東谷

Catch a glimpse of historic rural life

Tucked in the mountains in the southeast part of Kaga City, the Higashitani area consists of four villages. The reddish tiles and chimneys are renowned features of Higashitani's rustic townscape, and as the traditional houses have not changed much during the past century, the quiet and beautiful scenery of the mountain village has been preserved. Designated as an Important Preservation District for Groups of Traditional Buildings, alongside Kaga's Hashitate district, Higashitani offers visitors a rare opportunity to catch a glimpse of traditional Japanese mountain life.

MAP P3A2

● Aratani-machi, Imadachi-machi, Ozuchi-machi, and Suginomizu-machi, Yamanaka Onsen, Kaga City
 ▶ Approx. 30 min. drive from JR Kaga-Onsen Station
 ● ¥1,000 Free to visit ● P None



Komatsu City See

Natadera Temple ●那谷寺

An ancient temple in worship of Mt. Hakusan

An over 1,300-year-old temple, awarded a star in the Michelin Green Guide. At this sanctuary of nature worship, admire the dramatic natural rock formations and experience "rebirth" at the main shrine, by walking through a cave likened to a mother's womb. Especially well-known as an autumn spot.

MAP P3A2

● Yu-122 Nata-machi, Komatsu City
 ● From JR Kaga-Onsen Station, take the CANBUS Mountain Route to Natadera Temple ● General admission: 600 yen ● 9:15 A.M.–4 P.M. ● Open year-round ● P 300 spaces



Where to stay in the area

Komatsu City Stay

Étoile et fées @ Seseragi-no-mori

●瀬々らぎの森「エトワールエフェ」

Riverside inn with a vegetarian café

Tucked amongst cedar trees by the river, this cosy inn is where you'll be pampered with luxurious rooms, luscious greenery, and tranquil solitude under the stars. At the adjacent café, savor vegetarian meals made from local produce, and even an onsen and footbath! (café and bath open to non-staying visitors)

MAP P3A1

● Ka-122 Seinyo-machi, Komatsu City ● 15 min. drive from JR Awazu Station ● One night with breakfast incl.: from 12,100 yen ● Wed. ● Check-in: 4 P.M. / Check-out: 10 A.M. ● P 30 spaces



Kaga City Stay

Kurayado Yohei ●蔵やど与平

A traditional storehouse converted into a private lodging

This inn, made of wood from chestnut trees unique to areas with heavy snowfall, was once a storehouse that has since been moved and refurbished. Guests can reserve the entire house, and can cook their own meals (for free) or enjoy barbecues (at an additional cost). The bath, made of Amori hiba wood, provides a refreshing experience.

MAP P3A2

● Ha-30 Yamanaka Onsen Suginomizu-machi, Kaga City ● 50 min. drive from JR Kaga-Onsen Station ● One night with up to four people in a private building: from 27,500 yen (max. eight people) ● *Breakfast and dinner charged separately ● Check-in: 4 P.M. / Check-out: 10 A.M. ● P 5 spaces



▶ Perfect for a workation
 ● TAKIGAHARA CAFE's seasonal galette, from 1,200 yen ● 10:30 A.M.–6 P.M. ● Open year-round *Hours and regular holidays are subject to change

Komatsu City Stay

TAKIGAHARA FARM

Experience life on a farm

Designed to convey the charm of "farm living," this farm houses an inn, café, and workshop in renovated traditional *kominka* houses. Two types of lodging are available: the TAKIGAHARA CRAFT&STAY hostel and TAKIGAHARA HOUSE, a private rental house.

MAP P3A2

● Ta-4 Takigahara-machi, Komatsu City ● 30 min. drive from JR Komatsu Station ● CRAFT&STAY Band room: 9,000 yen/night for one person *5,000 yen for each additional person; House (max four people per house): 22,000 yen/night for one person *3,000 yen for each additional person ● Check-in: 3 P.M. / Check-out: 10 A.M. ● P 10 spaces



Kaga City Dine, buy

Kassen Shintoku

●食べ処 割鮮しんとく

Enjoy snow crab of unparalleled freshness and sweetness

Operated by a local fishing-boat owner, Kassen Shintoku serves up freshly-caught seafood in bento and set meals, which you can enjoy while gazing upon the Hashitate Port. The restaurant will also cook up any fresh seafood you purchase at their fishmonger downstairs.

MAP P3A1

● 2-11 Tajiri-machi Hamayama, Kaga City
 ● From JR Kaga-Onsen Station, take the CANBUS Sea Route to Hashitate Fishing Port
 ● 11 A.M.–3 P.M. (advance notice required if visiting after 3 P.M. on Sat., Sun., and national holidays); Maruya Suisan: 9 A.M.–4 P.M. ● Wed. (irregular closures on Tue.) ● P 10 spaces



Freshly harvested local ingredients and tranquil landscapes

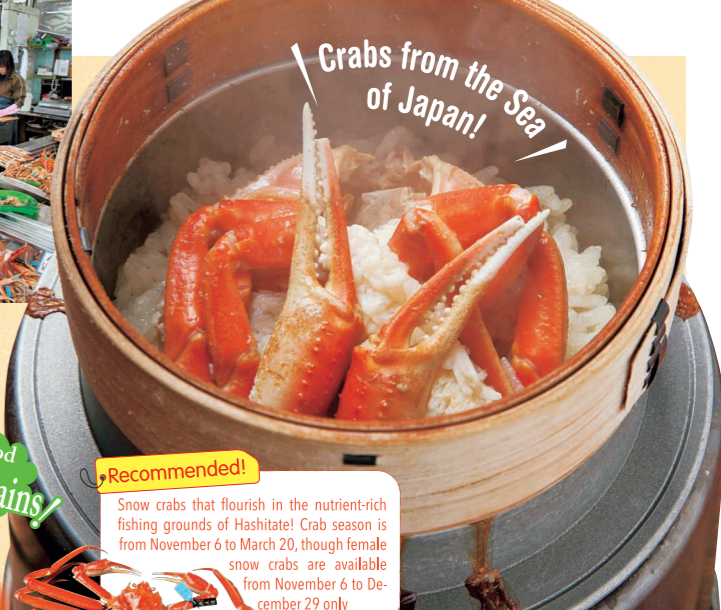
▶ The *katatsu*-style seating along the window offers views of the fishing port



Food from the mountains!
 Food from the sea!

Recommended!

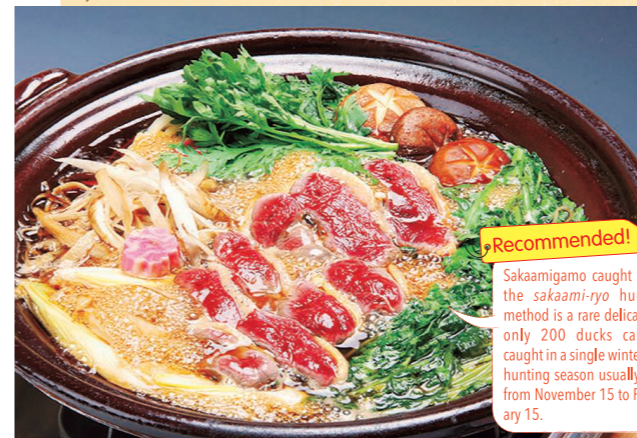
Snow crabs that flourish in the nutrient-rich fishing grounds of Hashitate! Crab season is from November 6 to March 20, though female snow crabs are available from November 6 to December 29 only



Crabs from the Sea of Japan!

Savor the flavors of nature Cafés and Restaurants

▼ Sakaami duck *jibunabe* (6,600 yen) is a sweet and savory hot pot made with ingredients stewed in soy sauce and sugar in the style of *jibun*, a local dish of simmered duck stew.



Recommended!

Sakaamigamo caught using the *sakaami-ryo* hunting method is a rare delicacy, as only 200 ducks can be caught in a single winter. The hunting season usually lasts from November 15 to February 15.

Kaga is blessed with abundant nature, with plains that stretch from Mt. Hakusan to the Sea of Japan. The area's fresh and selective ingredients, as well as its relaxed atmosphere, will satisfy both your stomach and your soul.

Nomi City Café, scenery

Satoyama Café ●さとやまカフェ

A relaxing space offering views of the peaceful countryside

Satoyama Café is located on a small hill behind the Tatsunokuchi Kyuryo Park. Enjoy a tranquil moment while sampling a wide variety of *omurice* (omelet over rice) dishes made with fresh eggs from a local poultry farm (from 880 yen) and pancakes (from 1,100 yen).

MAP P3B1

● He-116 Yunoya-machi, Nomi City ● 20 min. drive from JR Nomi-Neagari Station ● 11 A.M.–7 P.M.; open until 9 P.M. on Sat., Sun., and national holidays ● Sun., 3rd Thu. of the month (open if Thu. is a national holiday) ● P 15 spaces



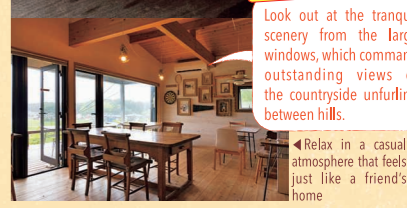
▶ The 1-no-1 cafeteria has a diverse menu

▶ IPOUND, 300 yen each (made by baked goods store *éclatant* in Nonoichi City)



Recommended!

Look out at the tranquil scenery from the large windows, which command outstanding views of the countryside unfolding between hills.



Relax in a casual atmosphere that feels just like a friend's home

Nonoichi City Buy, dine

1-no-1 (ichi-no-ichi) NONOICHI

●1の1 NONOICHI

The place to find good-quality products from Nonoichi

Enjoy the atmosphere of a Japanese school at 1-no-1. Besides the regular selection of dishes served in the cafeteria, you can try special dishes from well-loved local restaurants at the popular share kitchen. A variety of Nonoichi souvenirs are available in the gift shop.

MAP P3B1

● Inside Nigiwai no Sato Nonoichi Camino, 2-1-21 Honmachi, Nonoichi City ● From the south exit of JR Nonoichi Station, take the "Notty" community bus Northern Route to Camino ● 9 A.M.–8 P.M. (drinks and gift shop: open until 8 P.M.; last order at cafeteria: 7:30 P.M.; share kitchen: 10 A.M.–4 P.M.) ● Mon. (open if Mon. is a national holiday) ● P 95 spaces



▶ A quaint storehouse built over a century ago ▶ The ceiling beams speak of the building's history



▶ Vegetarian café La Petite Porte's curry lunch set and dessert plate, 1,980 yen

Come visit!



Getting to Kaga no Kuni



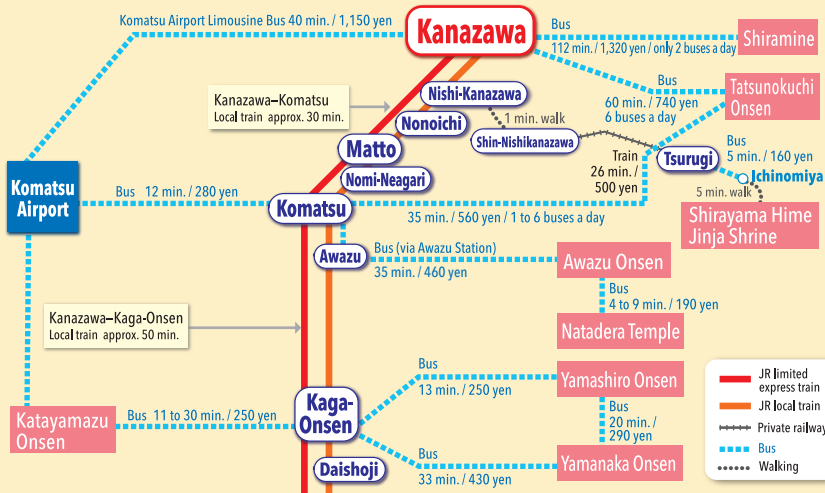
By air

Sapporo	2 hr.	Komatsu Airport
Tokyo (Haneda Airport)	1 hr.	
Fukuoka	1 hr. 30 min.	
Naha	2 hr. 10 min.	

By rail, bus or car

Tokyo	Shinkansen	3 hr.	Kanazawa Sta.
	Highway bus	8 hr.	Kanazawa City <small>Also to/from Kaga, Komatsu, and Hakusan City</small>
	Car	6 hr.	Kaga no Kuni
Nagoya	Limited express train	2 hr. 30 min.	Kanazawa Sta.
	Highway bus	3 hr.	Kanazawa City <small>Also to/from Kaga, Komatsu, and Hakusan City</small>
	Car	3 hr.	Kaga no Kuni
Osaka Kyoto	Limited express train	2 hr. 30 min.	Kaga-Onsen Sta. <small>Also to/from Komatsu and Matto stations</small>
	Highway bus	4 hr.	Kanazawa City <small>Also to/from Kaga, Komatsu, and Hakusan City</small>
	Car	3 hr.	Kaga no Kuni

*Travel times are approximate.



*Travel times and service frequency may vary between weekdays, weekends, and holidays, and between inbound and outbound routes.

*Another option is the Kaga Yunosato Express Bus, which travels between Kanazawa Station and the Kaga Onsen area in as little as 45 minutes.

For inquiries, please contact the Hokuriku Railroad Telephone Service Center.

Convenient tickets

Travel around Kaga

Kaga Loop Bus CANBUS

Wi-Fi is available

CANBUS loops around the major sightseeing spots in Katayamazu, Yamashiro, Yamanaka, and Awazu. There is a Mountain Route and Sea Route, both of which set off from JR Kaga-Onsen Station, as well as a route that connects to Komatsu Airport.

[Inquiries] ☎0761-72-7777 (Machizukuri Kaga)

[Fare] One-day pass: 1,100 yen;

Two-day pass: 1,300 yen *Elementary school-aged children are half price



A cheaper and more convenient way to travel around the Kaga Onsen area!

ECO Ride Coupon

A coupon convenient for sightseeing. Includes bonus facility admission tickets and dessert vouchers. Take the Kaga Tour Bus CANBUS, a regular bus or taxi, or drive a Nuku Mobi to explore the Kaga Onsen area's hot spring towns!

[Inquiries] ☎0761-72-6678 (Kaga Tabi Machi Net)

ECO Ride Coupon 800 yen

*Valid for 2 days (Set of 2 ride tickets, 1 facility admission ticket, and 1 sweets voucher)

Bus & Taxi

Two ride tickets: Choose any two from the following options.

- CANBUS 1 single-ride ticket
- Regular bus use 1 coupon (200 yen discount)
- Regular taxi use 1 coupon (200 yen discount)

Nuku Mobi

Use the two ride tickets together for a discount.

- Nuku Mobi use 2 coupons (400 yen discount)
- *Nuku Mobi availability is limited.

Advance reservations are recommended.

Leave it to a tour guide

Kaga no Kuni Tourism Gran Cab

Fits up to 6 people

30-min. private rental: 4,700 yen (tax incl.)

*Metered fare is also available

- Free Wi-Fi available
- Simultaneous interpretation available in 12 languages
- Cashless payment (credit cards and PayPay accepted)



A driver familiar with the Kaga area will show you around

To/From Komatsu Airport / JR Komatsu Sta. / JR Kaga-Onsen Sta. / JR Matto Sta. / JR Kanazawa Sta. Awazu Onsen, Katayamazu Onsen, Yamashiro Onsen, Yamanaka Onsen, Tatsunokuchi Onsen

Visit the website for more information <http://taxitrip.0152.jp/kaga/>

Inquiries regarding sightseeing taxis

Ishikawa Kotsu ☎076-231-4131
Kaga Daiichi Kotsu ☎0761-76-0111
Daiwa Jidoshu Kotsu ☎076-266-5166
Fuji Taxi ☎076-237-1020
Oriental ☎076-268-2022

Rent-a-car (Komatsu Airport)



Inquiries

CANBUS (Machizukuri Kaga) ☎0761-72-7777

Hokuriku Railroad Telephone Service Center ☎076-237-5115 (8 A.M.-7 P.M., available year-round)

*For Hokuriku Railroad Group bus and train inquiries only (they do not accept inquiries on taxis, JR trains, CANBUS, or other types of transportation)

Published by the Kaga Council for the Promotion of Regional Cooperation (All-Kaga Council)
Planned, edited, and produced by JTB Publishing Inc.

©2022 Kaga Council for the Promotion of Regional Cooperation (All-Kaga Council) / JTB Publishing Inc. All Rights Reserved.

Inquiries

Komatsu City Tourism & Exchange Division ☎0761-24-8076 (All-Kaga Council Office)
Komatsu Tourism & Local Products Network ☎0761-21-8208
Kaga Tabi Machi Net (Kaga City Tourism Information Center) ☎0761-72-6678
Hakusan City Tourism League ☎076-259-5893
Nomi City Sightseeing Interchange Section ☎0761-58-2211
Nonoichi City Regional Development Section ☎076-227-6160
Kawakita Town Office Industry & Economy Division ☎076-277-1111 (switchboard)

Welcome to Kaga no Kuni website



All-Kaga Council Instagram



*The information contained in this publication is up to date as of August 31, 2021. Prices, hours of operation, regular closures, menus, and other business information may have changed after publication, and some services may not be available due to temporary closures. In addition, while we have made every effort to ensure the accuracy of the information contained herein, we recommend checking and making reservations in advance over the phone, etc. *Prices listed in this publication generally include consumption tax, which was confirmed at the time of fact-checking. Also, entry and other fees, unless otherwise indicated, are the price for an adult. Please note, however, that all prices are subject to change. *In general, New Year's holiday, summer Obon holiday, Golden Week (late April to early May), and temporary closures are not mentioned in the descriptions of regular closures. *Hours listed in this publication, unless otherwise indicated, generally refer to the time of store (facility) opening until store (facility) closure. Please note that it is normal for food orders and store (facility) entry to be denied 30 minutes to one hour prior to the regular store (facility) closing time. *The hot spring qualities and effects listed in this publication are those of the hot spring source, and not those of individual baths. *The contents and time required for activities listed in this publication are approximate and are subject to change. *The accommodation rates listed in this publication are generally the rates per room for single and twin rooms. Rates for one night with two meals, one night with breakfast only, and one night with no meals are the rates per person when two people share a room. These rates are based on the consumption tax rate at the time of fact-checking, and include all taxes and service charges. Please note that rates are subject to change depending on the season and number of guests. *Please note that travel times listed in the transportation access guide of this publication are approximate, and that fares for public transportation may differ in some areas and by company when fares are paid with an IC card. *The content of this publication may have changed due to countermeasures against COVID-19.